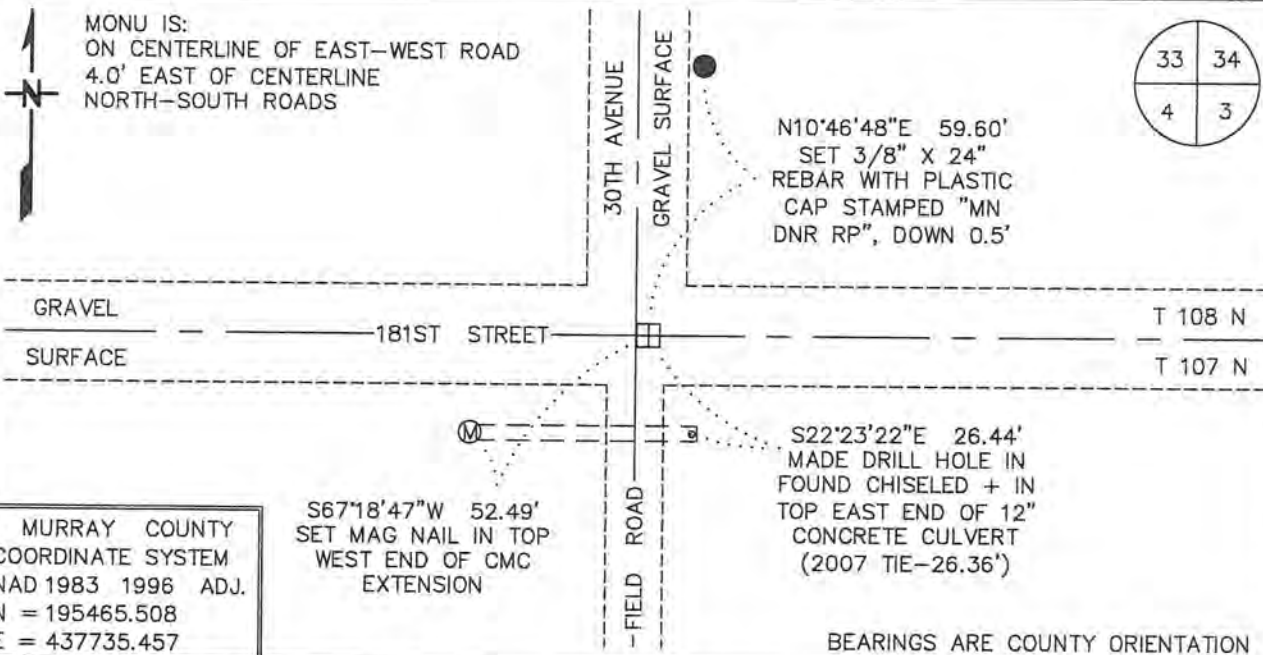


# CERTIFICATE OF LOCATION OF GOVERNMENT CORNER

NORTHEAST Corner of Section 4, Township 107 N, Range 43 W  
5TH Principal Meridian, State of Minnesota, County of MURRAY

At the corner location shown on the sketch:

- On 11/1/16 found a 8" X 9" ROUNDED TOP STONE, STANDING UPRIGHT  
DOWN 2.7'
  - left monument as found,
  - lowered monument,
  - removed monument (explain)
- On 11/1/16 Placed a 3/4" X 24" REBAR WITH PLASTIC CAP STAMPED  
"MN DNR LS 17003", DOWN 0.5', OVER FOUND STONE



Statement of evidence for this corner location is on back of this page.

FEBRUARY 2017  
WMA00754

I hereby certify that this plan, specification, or report was prepared by me or under my direct supervision and that I am a duly Licensed Land Surveyor under the laws of the State of Minnesota.

SIGNATURE Bruce W. Shepperd DATE 10/9/17 License Number 17003  
 BRUCE W. SHEPPERD

Northeast Corner of Section 4, Township 107 North, Range 43 West  
Page 1 of 2

The DNR Division of Lands and Minerals contacted the following for survey information:

Website - [mngeo.state.mn.us](http://mngeo.state.mn.us) for GLO plat and field notes

Website - [murray-countymn.com](http://murray-countymn.com) for section and quarter section corner information

Murray County Recorder's Office

Bueltel-Moseng Land Surveying, Inc. of Marshall

Westwood Multi-Disciplined Surveying & Engineering of Eden Prairie

1861 U.S. General Land Office notes, obtained from [mngeo.state.mn.us](http://mngeo.state.mn.us), show the corner marked with a post and deposited charcoal in a mound of earth and sod with trench, as per instructions.

1908 Plat Books for Cameron Township, obtained from the County Recorder's Office, show  
1926 roads east-west-south in the area of the corner.

1927 October 27, A Surveyor's Record Book, page 345, obtained from the County Recorder's Office, which is also on Website [murray-countymn.com](http://murray-countymn.com), shows that the northwest corner of Section 2 was established by using the northwest corner of Section 3 and the northeast corner of Section 1. A distance of 5284 feet is shown along the north line of Section 3.

No information is given about what kind of monument was found or set at the northwest corner of Section 3/northeast corner of Section 4.

2007 July 5, A Certificate of Location of Government Corner, obtained from the County Recorder's Office, which is also on Website [murray-countymn.com](http://murray-countymn.com), signed by Christopher Moehrl, PE & LS No 40853, shows that a ½ inch capped iron pipe with number 11943 was found down 0.2 of a foot at the corner. The following ties are shown to the corner:

at the intersection of the center line of roads north, east and west

in line with the center line of a field road south

"X" in west side of culvert top, southwest, 31.41 feet

"X" in east side of culvert top, southeast, 26.36 feet

set 3/8 inch rebar, down 0.5 of a foot, northeast, 45.82 feet

Northeast Corner of Section 4, Township 107 North, Range 43 West  
Page 2 of 2

2016 November 1, the DNR Division of Lands and Minerals found an iron rod with a plastic cap stamped 11943 at the corner. Then a hole was dug with a backhoe the center being the found iron rod and an 8 inch by 9 inch rounded top stone was found standing in an upright position down 2.7 feet. The stone was found to be:

- 5283.41 feet from the northeast corner of Section 3
- 0.17 of a foot east of the found iron rod with plastic cap stamped 11943
- on the center line of an east west road
- 4 feet east of the center line of a road north
- 4 feet east of the center line of a field road south

Analysis of the above information led the DNR Division of Lands and Minerals to conclude that the found 8 inch by 9 inch rounded top stone marks the location of the corner.

The found iron rod with plastic cap stamped 11943 was discarded and a  $\frac{3}{4}$  inch by 24 inch rebar with a plastic cap stamped "MN DNR LS 17003" was set over the found 8 inch by 9 inch rounded top stone as shown on the sketch of reference ties.

Searched for and found two of the 2007 record ties as shown on the sketch of reference ties.